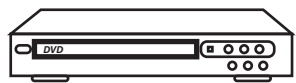


# CA-30 Amplifier Quick-Start Manual



Accepts line level inputs from typical media sources



DVD Players

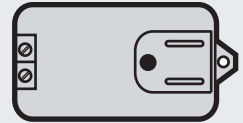


Computers



Projectors

24 VDC wall switching power supply



16 Watt amplifier can power 2 or 4 speakers



Optional XD wireless system. Receiver audio and power connect through a single CAT 5/6 cable.

Teacher and student microphones are available.

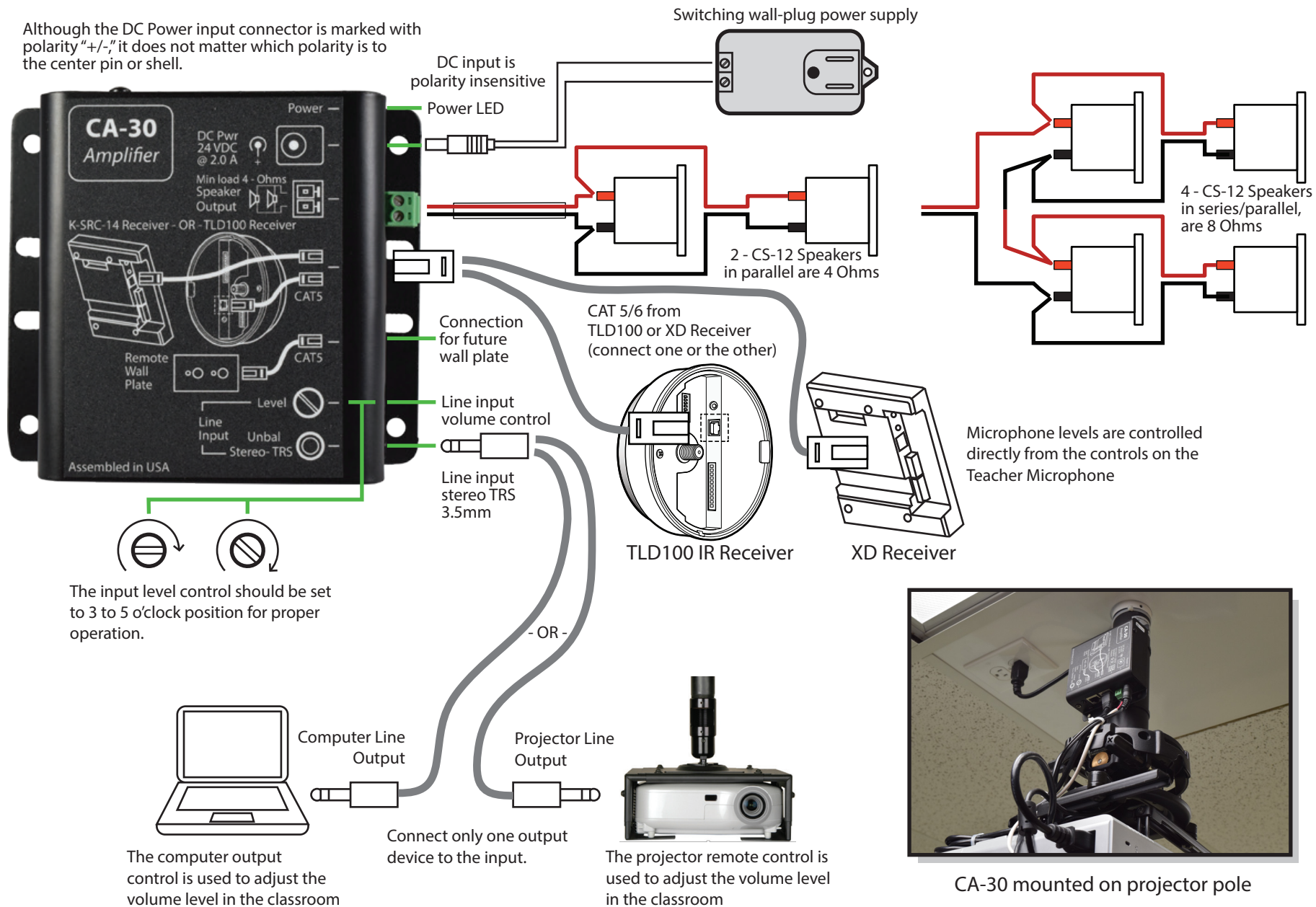


Optional Infrared wireless system. Receiver audio and power connect through a single CAT 5/6 cable.

Teacher and student microphones are available.



Although the DC Power input connector is marked with polarity "+/-," it does not matter which polarity is to the center pin or shell.

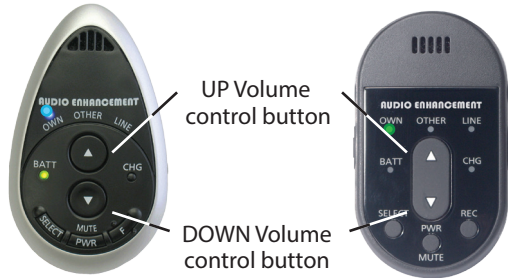


Call Audio Enhancement at 800.383.9362 for more wiring diagrams

# Remote Volume Control of the Teacher and Student Microphones

**XD**

**IR**



## Teacher Microphone (OWN) Level Adjustment

Press either the UP or DOWN arrow button to increase or decrease the volume level of the Teacher microphone. A blue LED (on IR mics) or green LED (on XD mics) over "OWN" (for own microphone) will flash with each press.

The #1 LED on the receiver will blink with each button press of UP or DOWN.

**TLD100  
IR Receiver**

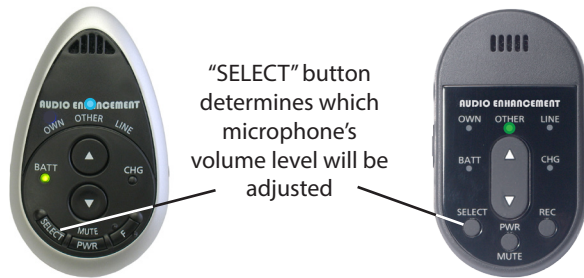
**K-SRC14  
XD Receiver**



## Student Microphone (OTHER) Level Adjustment

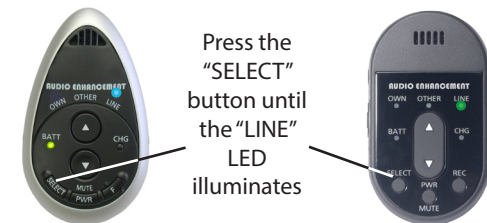
To adjust the Student Microphone (OTHER) volume, first press the "SELECT" button to move the LED to the "OTHER" label. Next, press the UP/DOWN buttons to control the level of the "OTHER" microphone, which is typically the Student Microphone.

The #2 LED on the receiver will blink with each button press of UP or DOWN.



## Multimedia (LINE) Level Adjustment

If multimedia is routed through the TLD100 or K-SRC14, then the "LINE" level control on the teacher microphone will remotely adjust the multimedia volume.



\*XD microphones must be paired with their receivers. Instructions can be found in the XD First-time User Guide. Reference the XD, IR, CA-30, and Speaker Install manuals to find answers to other questions.